

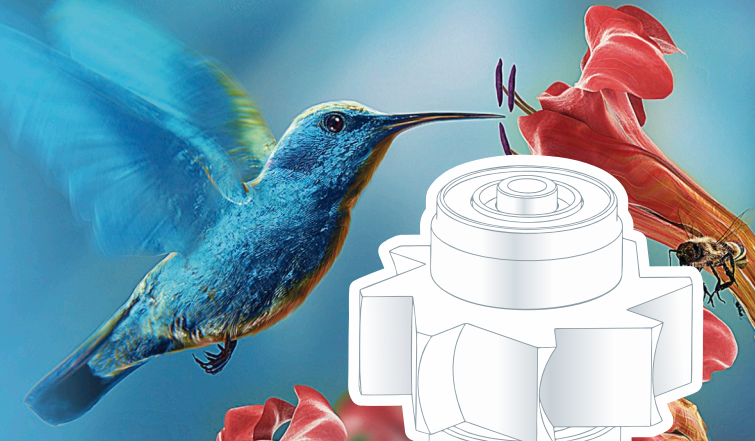
...a family owned business, since 1988.



Our quality Your success



**TEHNODENT**<sup>®</sup>  
Catalogue



**TEHNODENT D.O.O.**

Rudjinci 116v, 36210 Vrnjačka Banja / Serbia

Tel: +381 (69) 5 615 715, +381 (36) 612 580

[office@tehnodent.com](mailto:office@tehnodent.com)

[www.tehnodent.com](http://www.tehnodent.com)

[www.tehnodent.com](http://www.tehnodent.com)



Rudjinci 116v, 36210 Vrnjačka Banja / Serbia

Tel: +381 (69) 5 615 715, +381 (36) 612 580

[office@tehnodent.com](mailto:office@tehnodent.com)

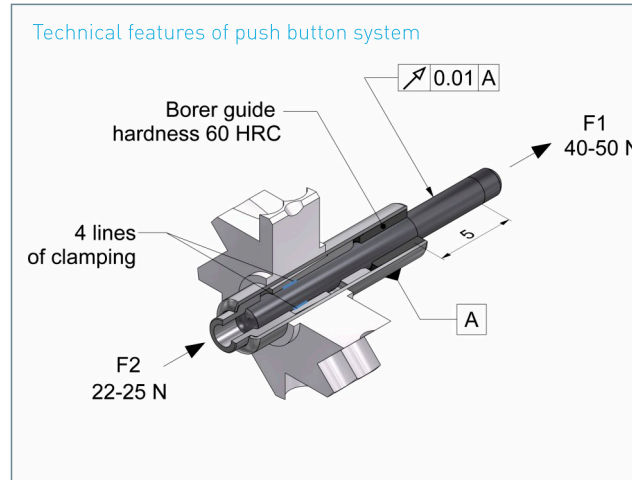
TEHNODENT - a family owned business , since 1988.

Being the first OEM production facility of dental cartridges and turbines in the world, Tehnodent today offers best service in relation to three most important parameters when choosing your partner

- Time (**fast service**), Value (**utmost quality**) and Money (**various discounts**).

**Our Quality is Your Success**

[www.tehnodent.com](http://www.tehnodent.com)



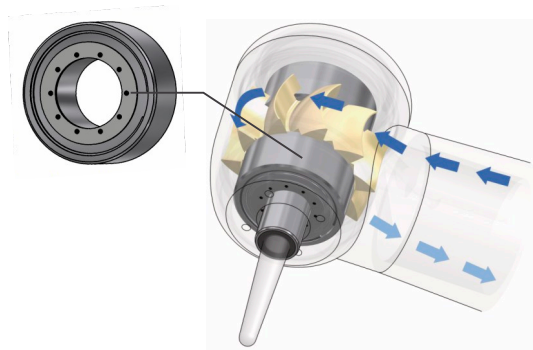
- The clamping force, bur's extracting force is **40-50 N**
- The opening force of Push Button system is **22-25 N**
- The mechanism of clamping, the number of linking spots: **4 lines of clamping**
- Bur guide hardness and opening dimension **60 HRC,  $\varnothing 1.6^{+0.005}$**
- Eccentricity of bur in rotation - circular run-out **is max. 0,01 mm**
- Shaft hardness  $\varnothing 3.175$  **52 HRC**
- Shaft assemblage: **Laser Welded**

When following the requirements of ISO 1797-1, which determines the proper bur's qualifications (among which is diameter size 1,59 - 1,6mm) the guarantee for the clamping force of the shaft's mechanism is **12 months**.

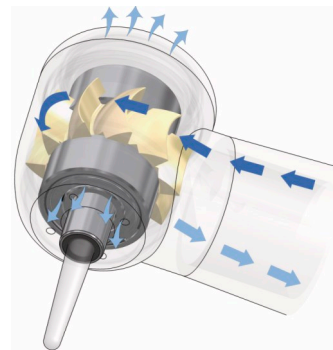
[www.tehnodent.com](http://www.tehnodent.com)



Try our new customised bearings which will upgrade your current handpiece performance and prolong the bearings' lifetime. This specific design enables more strict control of water and air flow, which significantly increases turbine's power and more importantly turbine's cutting speed.

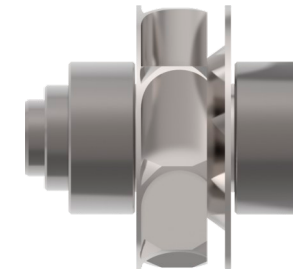


Tehnodent rotor with customised bearings

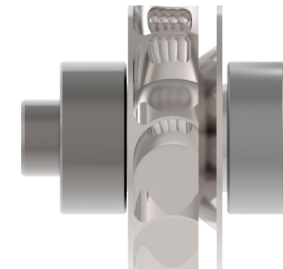


Tehnodent rotor with standard bearings

With new impeller design, Tehnodent has managed to increase overall power for **2W**.



Original design



Tehnodent Impeller design +2W





Rotor push button packages for KAVO\* turbines

TYPE

KAVO 630, 640

KAVO 650

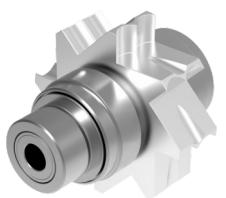
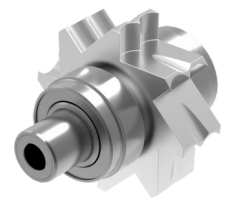
KAVO 642, 645

KAVO 637

KAVO 655, 660

KAVO 7000

TYPE



KAVO 630, 640

21006 - Unit with ceramic bearings  
31006 - Customised bearings

KAVO 650

21046 - Unit with ceramic bearings

KAVO 642, 645

21086 - Unit with ceramic bearings  
31086 - Customized bearings

KAVO 637

21106 - Unit with ceramic bearings  
31106 - Customised bearings  
41106 - Tehnodent Impeller design

KAVO 655, 660

21126 - Unit with ceramic bearings  
31126 - Customised bearings  
41126 - Tehnodent Impeller design

KAVO 7000

21146 - Unit with ceramic bearings  
31146 - Customised bearings  
41146 - Tehnodent Impeller design





Rotor push button packages for KAVO\* turbines

TYPE

KAVO 8000

KAVO 636, 646

KAVO 635B

KAVO 639, 642, 645

KAVO 647B, 649B

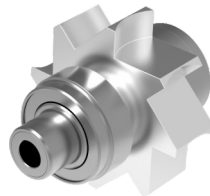
KAVO 6000B

TYPE



KAVO 8000

21186 - Unit with ceramic bearings  
31186 - Customised bearings  
41186 - Tehnodent Impeller design



KAVO 636, 646

21226 - Unit with ceramic bearings  
31226 - Customised bearings  
41226 - Tehnodent Impeller design



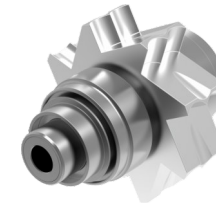
KAVO 635B

21246 - Unit with ceramic bearings  
31246 - Customised bearings  
41246 - Tehnodent Impeller design



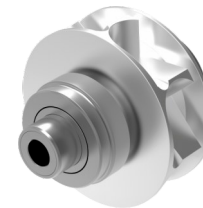
KAVO 639, 642, 645

21266 - Unit with ceramic bearings  
31266 - Customised bearings



KAVO 647B, 649B

21286 - Unit with ceramic bearings  
31286 - Customised bearings



KAVO 6000B

21326 - Unit with ceramic bearings  
41326 - Tehnodent Impeller design



Rotor push button packages for KAVO\* turbines

TYPE

KAVO 6500B

KAVO 4500BR, 5000B

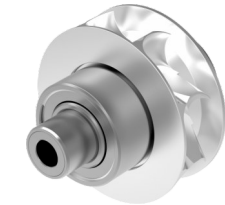
KAVO S609, S619

KAVO E679, E680

KAVO S605, S615

KAVO M9000

TYPE



KAVO 6500B

- 21366 - Unit with ceramic bearings
- 41366 - Tehnodent Impeller design

KAVO 4500BR, 5000B

- 21406 - Tehnodent Impeller design
- 41406 - Tehnodent Impeller design

KAVO S609, S619

- 21426 - Unit with ceramic bearings
- 31426 - Customised bearings
- 41426 - Tehnodent Impeller design

KAVO E679, E680

- 21446 - Unit with ceramic bearings
- 41446 - Tehnodent Impeller design

KAVO S605, S615

- 21466 - Unit with ceramic bearings
- 31466 - Customised bearings
- 41466 - Tehnodent Impeller design

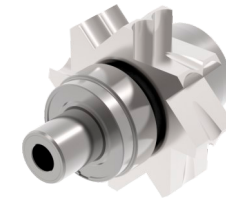
KAVO M9000

- 21486 - Unit with ceramic bearings
- 31486 - Customised bearings
- 41486 - Tehnodent Impeller design



Rotor push button packages for KAVO\* and CHIRANA\* turbines

**TYPE** **KAVO E675L** **CHIRANA TGL Easy**



KAVO E675L

21506 - Unit with ceramic bearings

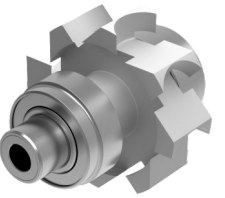
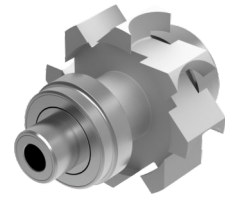
CHIRANA TGL Easy

28846 - Unit with ceramic bearings  
38846 - Customised bearings



Rotor push button packages for SIEMENS\* turbines

**SIEMENS 4000S** **SIEMENS TM1 mini** **SIEMENS TS1, TS2** **TYPE**



SIEMENS 4000S

22006 - Unit with ceramic bearings  
32006 - Customised bearings

SIEMENS TM1 mini

22026 - Unit with ceramic bearings  
32026 - Customised bearings  
42026 - Tehnodent Impeller design

SIEMENS TS1, TS2

22046 - Unit with ceramic bearings  
32046 - Customised bearings



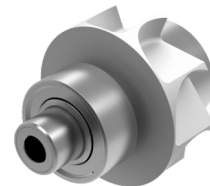
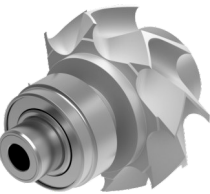
Rotor push button packages for SIRONA\* turbines

TYPE

SIRONA T1 Control TC3

SIRONA T2 Control

SIRONA T2/T3 Racer



SIRONA T1 Control TC3

22066 - Unit with ceramic bearings  
32066 - Customised bearings

SIRONA T2 Control

22086 - Unit with ceramic bearings

SIRONA T2/T3 Racer

22106 - Unit with ceramic bearings  
42106 - Tehnodent Impeller design

SIRONA T1 TMC mini

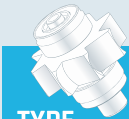


SIRONA T1 TMC mini

22126 - Unit with ceramic bearings  
32126 - Customised bearings

Rotor push button packages for SIRONA\* turbines

TYPE



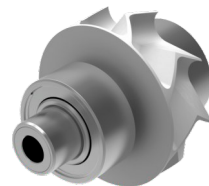
SIRONA T1/T2/T3 mini



SIRONA T1/T2/T3 mini

22146 - Unit with ceramic bearings  
42146 - Tehnodent Impeller design

SIRONA SIROBoost



SIRONA SIROBoost

22166 - Unit with ceramic bearings



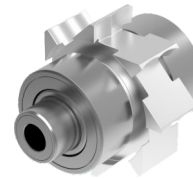
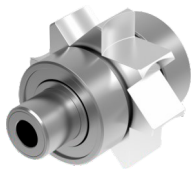
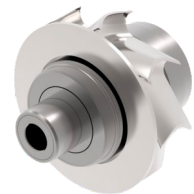
Rotor push button packages for SIRONA and ELITE\* turbines

TYPE

SIRONA T2, T3 Boost

ELITE mini

ELITE Torque



SIRONA T2, T3 Boost

22206 - Unit with ceramic bearings

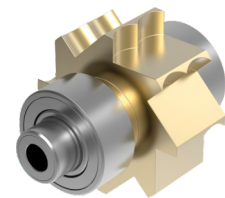
Elite mini

28166 - Unit with ceramic bearings  
38166 - Customised bearings

Elite Torque

28186 - Unit with ceramic bearings  
38186 - Customised bearings

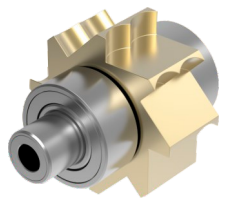
W&H 395, 396



W&H 395, 396

23016 - Unit with ceramic bearings  
33016 - Customised bearings

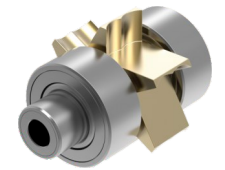
W&H 795, 895, 798



W&H 795, 895, 798

23036 - Unit with ceramic bearings  
33036 - Customised bearings

W&H 796, 896



W&H 796, 896

23046 - Unit with ceramic bearings  
33046 - Customised bearings



TYPE



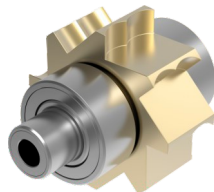
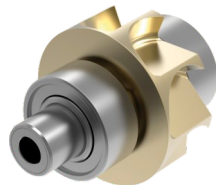
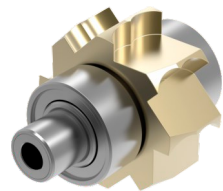
Rotor push button packages for W&H\* turbines

TYPE

W&H Trend TC 95

W&H Synea TA 98 (until 1998)

W&H Adec 898



W&H Trend TC 95

23066 - Unit with ceramic bearings  
33066 - Customised bearings

W&H Synea TA 98 (until 1998)

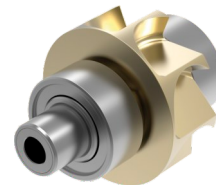
23086 - Unit with ceramic bearings  
33086 - Customised bearings  
43086 - Tehnodent Impeller design

W&H Adec 898

23106 - Unit with ceramic bearings  
33106 - Customised bearings

W&H Alegra TE-95

Synea TA-98 (until 2007)



W&H Alegra TE-95

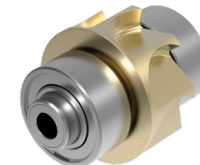
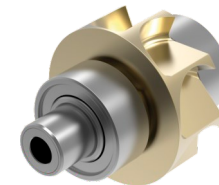
23126 - Unit with ceramic bearings  
33126 - Customised bearings  
43126 - Tehnodent Impeller design

Rotor push button packages for W&H\* turbines

TYPE

W&H Alegra TE-98

W&H Synea TA-96



W&H Alegra TE-98

23146 - Unit with ceramic bearings  
33146 - Customised bearings  
43146 - Tehnodent Impeller design

W&H Synea TA-96

23166 - Unit with ceramic bearings  
33166 - Customised bearings  
43166 - Tehnodent Impeller design





TYPE

Rotor push button packages for W&H\* turbines

W&H Synea TA-98 LED

W&H Synea TA-97

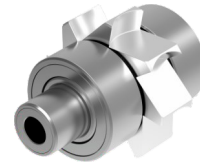
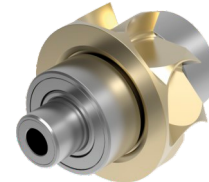
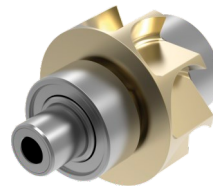
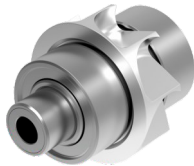
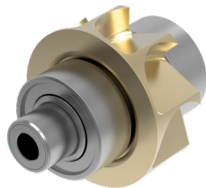
W&H Alegra TE-97

W&H Alegra TE-95/TE-98

W&H Synea Vision TK/98

ALPHA Illuminator 45

TYPE



W&H Synea TA-98 LED

- 23186 - Unit with ceramic bearings
- 33186 - Customised bearings
- 43186 - Tehnodent Impeller design

W&H Synea TA-97

- 23206 - Unit with ceramic bearings
- 33206 - Customised bearings
- 43206 - Tehnodent Impeller design

W&H Alegra TE-97

- 23216 - Unit with ceramic bearings
- 33216 - Customised bearings
- 43216 - Tehnodent Impeller design

W&H Alegra TE-95/TE-98

- 23226 - Unit with ceramic bearings
- 33226 - Customised bearings

W&H Synea Vision TK/98

- 23246 - Unit with ceramic bearings
- 33246 - Customised bearings
- 43246 - Tehnodent Impeller design

Alpha Illuminator 45

- 28146 - Unit with ceramic bearings
- 38146 - Customised bearings





Rotor push button packages for BIEN AIR\* turbines

**BIEN AIR Black Pearl**

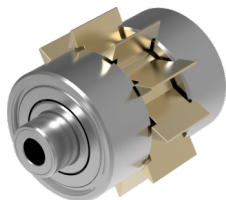
**BIEN AIR Bora**

**BIEN AIR Prestige**

**BIEN AIR Tornado LK, L**

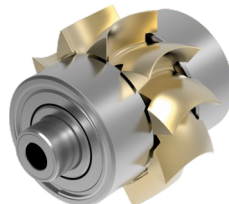
Rotor push button packages for BIEN AIR and STAR\* turbines

**STAR 430**



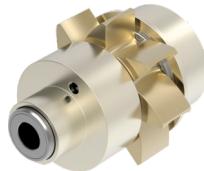
**BIEN AIR Black Pearl**

- 24006 - Unit with ceramic bearings
- 34006 - Customised bearings
- 44006 - Tehnodent Impeller design



**BIEN AIR Bora**

- 24066 - Unit with ceramic bearings
- 34066 - Customised bearings
- 44066 - Tehnodent Impeller design



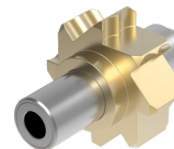
**BIEN AIR Prestige**

- 24086 - Unit with ceramic bearings
- 44086 - Tehnodent Impeller design



**BIEN AIR Tornado LK, L**

- 24106 - Unit with ceramic bearings
- 44106 - Tehnodent Impeller design



**STAR 430**

- 28300 - Unit w/o bearings

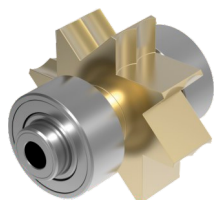
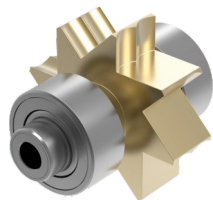
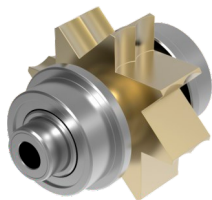


Rotor push button packages for CASTELLINI\* turbines

CASTELLINI Hi power M

CASTELLINI Hi Power  
Hi Power 2

CASTELLINI Gold 2



CASTELLINI Hi power M

25006 - Unit with ceramic bearings  
35006 - Customised bearings  
45006 - Tehnodent Impeller design

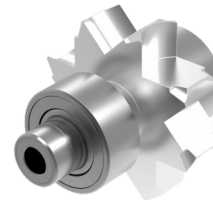
CASTELLINI Hi Power, Hi Power 2

25016 - Unit with ceramic bearings

CASTELLINI Gold 2

25026 - Unit with ceramic bearings

CASTELLINI Silent Power



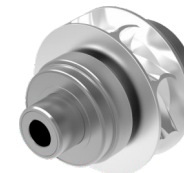
CASTELLINI Silent Power

25046 - Unit with ceramic bearings  
45046 - Tehnodent Impeller design

Rotor push button packages for CASTELLINI and VECTOR\* turbines

VECTOR Velocity Extreme  
mini

VECTOR Velocity Extreme



VECTOR Velocity Extreme mini

28766 - Unit with ceramic bearings

VECTOR Velocity Extreme

28786 - Unit with ceramic bearings





TYPE

Rotor push button packages for MIDWEST\* turbines

MIDWEST Tradition L

MIDWEST Tradition

MIDWEST Stylus

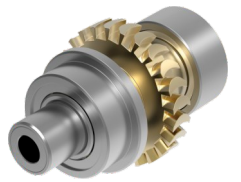
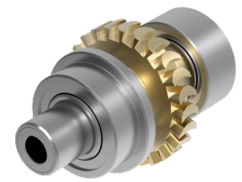
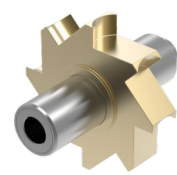
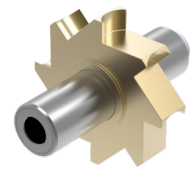
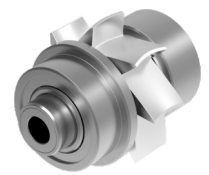
MIDWEST Stylus 540S

MIDWEST Quiet Air PB

MIDWEST Quiet Air L



TYPE



MIDWEST Tradition L

26006 - Unit with ceramic bearings  
36006 - Customised bearings

MIDWEST Tradition

26026 - Unit with ceramic bearings  
36026 - Customised bearings

MIDWEST Stylus

26040 - Unit w/o bearings

MIDWEST Stylus 540S

26060 - Unit w/o bearings

MIDWEST Quiet Air PB

26086 - Unit with ceramic bearings

MIDWEST Quiet Air L

26106 - Unit with ceramic bearings



TYPE

Rotor push button packages for NSK\* turbines

NSK Ti-Max X700

NSK Ti-Max X600

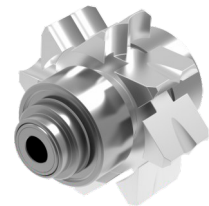
NSK Ti-Max X500 and NL9000M

NSK SX-SU03

NSK SX - MU03

NSK NMC-SU03

TYPE



NSK Ti-Max X700

27006 - Unit with ceramic bearings  
37006 - Customised bearings

NSK Ti-Max X600

27026 - Unit with ceramic bearings  
37026 - Customised bearings

NSK Ti-Max X500 and NL9000M

27046 - Unit with ceramic bearings  
37046 - Customised bearings

NSK SX-SU03

27066 - Unit with ceramic bearings

NSK SX - MU03

27086 - Unit with ceramic bearings

NSK NMC-SU03

27106 - Unit with ceramic bearings



TYPE

Rotor push button packages for NSK\* turbines

NSK NMC-TU03

NSK Ti-Max Z900

NSK Ti-Max Z800

NSK Ti-SU03

Rotor push button packages for NSK and MORITA\* turbines

MORITA PAR-4HEX-0

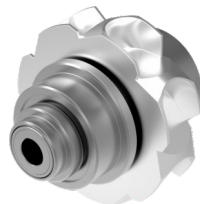
MORITA PAR-4HX-0

TYPE



NSK NMC-TU03

27126 - Unit with ceramic bearings



NSK Ti-Max Z900

27146 - Unit with ceramic bearings  
37146 - Customised bearings



NSK Ti-Max Z800

27166 - Unit with ceramic bearings  
37166 - Customised bearings



NSK Ti-SU03

27186 - Unit with ceramic bearings



MORITA PAR-4HEX-0

28866 - Unit with ceramic bearings



MORITA PAR-4HX-0

28886 - Unit with ceramic bearings



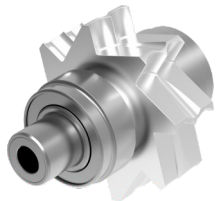
Rotor push button packages for MK DENT\* turbines

**TYPE** **MK DENT TC 2011**

**MK DENT TC 2012, TC 2032**

**MK DENT TC 2031**

Caps for various turbines



**MK DENT TC 2011**

28706 - Unit with ceramic bearings  
38706 - Customised bearings



**MK DENT TC 2012, TC 2032**

28726 - Unit with ceramic bearings  
38726 - Customised bearings



**MK DENT TC 2031**

28746 - Unit with ceramic bearings  
38746 - Customised bearings

Durability of Tehnodent's back caps is achieved by high grade stainless steel and precise CNC engineering. To make assembly even easier, you can now find the name of each model engraved inside of every back cap.





Caps for various turbines

TYPE

KAVO



KAVO

21049 - KAVO 630, 636, 640, 646, 650  
21129 - KAVO 655, 660, 609, 619, 7000  
21189 - KAVO 8000, M9000  
21449 - KAVO E680  
21469 - KAVO 605,615

SIEMENS / SIRONA



SIEMENS / SIRONA

22009 - SIEMENS 4000S  
22069 - SIRONA T1 Control/TC3  
22089 - SIRONA T1/T2 Control\*  
22109 - SIRONA T2/T3 Racer\*  
22129 - SIRONA T1 TMC Mini  
22149 - SIRONA T1/T2/T3 Mini\*  
22169 - SIRONA Siro Boost\*

\* delivered with corresponding washers

W&H



W&H

23089 - W&H Synea TA-98 (until 2009)  
23129 - W&H Alegria TE-95, TE-98 (until 2009)  
23169 - W&H Synea TA-96 (until 2009)  
23189 - W&H Synea TA-98, TA-98 LED (from 2007)  
23209 - W&H Synea TA-97, TA-97 LED (from 2007)  
23229 - W&H Alegria TE-95, TE-98,  
TE-98 LED (from 2009)

BIEN AIR



BIEN AIR

24009 - BIEN AIR Black Pearl\*  
24069 - BIEN AIR Bora\*

\* delivered with corresponding washers

NSK



NSK

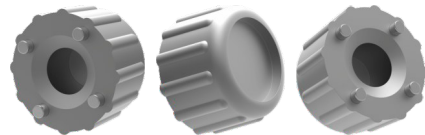
27009 - NSK Ti-Max X700  
27029 - NSK Ti-Max X600  
27149 - NSK Ti-Max Z900  
27169 - NSK Ti-Max Z800

Caps for various turbines

TOOLS FOR REMOVING CAPS



CAPS



TOOLS FOR REMOVING CAPS

2831 - KAVO 646, 650, 640, 655, 7000  
1788 - SIRONA T1 Control/TC3  
1797 - SIRONA T1 TMC Mini  
1781 - W&H 395, 795  
1783 - W&H Synea TA-97, TA-97 LED (from 2007)  
1786 - W&H Synea TA-96 (until 2009)  
1787 - W&H Synea TA-98 (until 2009)  
1798 - W&H Alegria TE-95/TE-98/TE-98 LED  
1799 - W&H Synea TA-98,TA-98 LED (from 2007)  
1784 - BIEN AIR Bora  
1789 - BIEN AIR Black Pearl  
2835 - BIEN AIR Croma TR





Rotors for lab handpieces

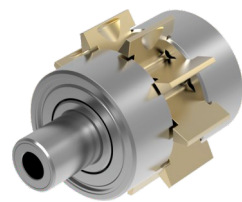
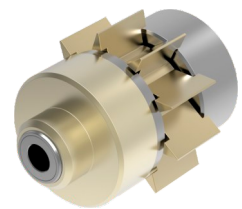
**BIEN AIR LAB TD783, TDS890**

**FARO Mistral**

**FARO TL 420**

**Rotor for Tehnodent lab handpiece**

**TEHNODENT LAB HANDPIECE**



[BIEN AIR LAB TD783, TDS890](#)

Art. No. 24125

[FARO Mistral](#)

Art. No. 28547

[FARO TL 420](#)

Art. No. 28527

[Rotor for Tehnodent lab handpiece](#)

Art. No. 24826

[TEHNODENT lab handpiece](#)

Drive air pressure: 3.0 to 3.2 bar  
Spray air pressure: 2.5 bar  
Spray flow: 60 ml/min  
Weight: 93 gr  
Power: 25 W  
Rotation speed: 330,000 to 350,000 rpm  
Bur's diameter: Ø 1.6  
Art. No. 24800



HEAD GEARS for Contra Angles

**KAVO 25LH**

**KAVO 25LP**

**KAVO E25L**

**BIEN AIR CA, 1:5**

**SIRONA S200L, Z11, 1:5** **SIRONA S200L, C200L, Z13, 1:5**



**KAVO 25LH**

Art. No. 2506

**KAVO 25LP**

Art. No. 2516

**KAVO E25L**

Art. No. 2526

**BIEN AIR CA, 1:5**

Art. No. 2566

**SIRONA S200L, Z11, 1:5**

Art. No. 2586

**SIRONA S200L, C200L, Z13, 1:5**

Art. No. 2596



HEAD GEARS for Contra Angles  
**W&H WA-99 (until 2007)**



W&H WA-99 (until 2007)

Art. No. 2606

**BIEN AIR MC2 LED**



BIEN AIR MC2 LED

Art. No. 1332

**BIEN AIR MC2 IR**



BIEN AIR MC2 IR

Art. No. 1334

Rotors for micromotors  
**BIEN AIR MC3 IR, MC3 LK**



BIEN AIR MC3 IR, MC3 LK

Art. No. 1333



## Brushes for micromotors

BIEN AIR MC2

BIEN AIR MC3

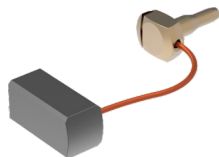
**KAVO**

**SIEMENS**



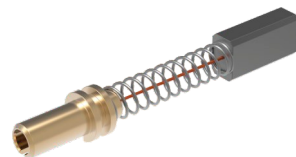
BIEN AIR MC2

Art. No. 1335

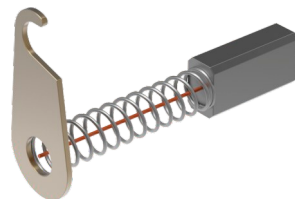


BIEN AIR MC3

Art. No. 1345

KAVO

Art. No. 1314



SIEMENS

Art. No. 1301

## Notes

42

TEHNODENT

BIEN AIR / KAVO / SIEMENS

\*Companies KAVO, SIEMENS, SIRONA, BIEN AIR, W&H, NSK, MIDWEST, STAR, MK DENT, CASTELLINI, ELITE, MORITA, ALPHA, VECTOR, CHIRANA, FARO are registered trademarks of the previously mentioned companies. TEHNODENT company or its products is in no way connected with the mentioned companies.

Rudjinci 116v, 36210 Vrnjačka Banja / Serbia

[www.tehnodent.com](http://www.tehnodent.com)

office@tehnodent.com

