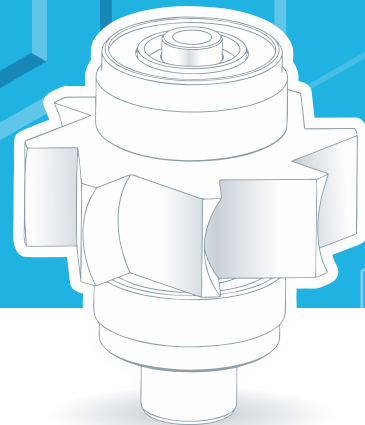


...a family owned business, since 1988.



TEHNODENT®

Catalogue 2019



www.tehnodent.com



TEHNODENT®

Rudjinci 116v, 36210 Vrnjačka Banja / Serbia

Tel: +381 (69) 1 444 745

info@tehnodent.com

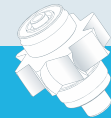
TEHNODENT - a family owned business , since 1988.

Being the first OEM production facility of dental cartridges and turbines in the world, Tehnodent today offers best service in relation to three most important parameters when choosing your partner

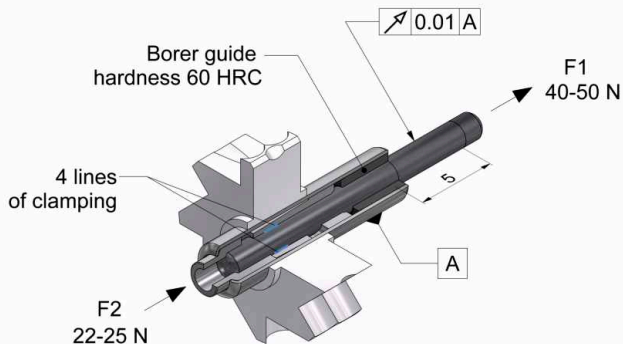
- Time (**fast service**), Value (**utmost quality**) and Money (**various discounts**).

Our Quality is Your Success

www.tehnodent.com



Technical features of push button system



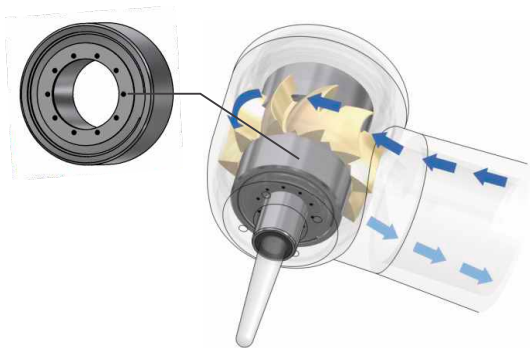
- The clamping force, bur's extracting force is **40-50 N**
- The opening force of Push Button system is **22-25 N**
- The mechanism of clamping, the number of linking spots: **4 lines of clamping**
- Bur guide hardness and opening dimension **60 HRC, $\varnothing 1.6^{+0.005}$**
- Eccentricity of bur in rotation - circular run-out **is max. 0,01 mm**
- Shaft hardness $\varnothing 3.175$ **52 HRC**
- Shaft assemblage: **Laser Welded**

When following the requirements of ISO 1797-1, which determines the proper bur's qualifications (among which is diameter size 1,59 - 1,6mm) the guarantee for the clamping force of the shaft's mechanism is **12 months**.

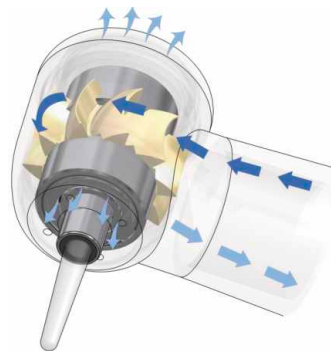


Customised bearings

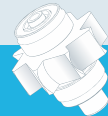
Try our new customised bearings which will upgrade your current handpiece performance and prolong the bearings' lifetime. This specific design enables more strict control of water and air flow, which significantly increases turbine's **power** and more importantly turbine's **cutting speed**.



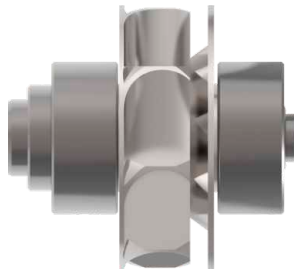
Tehnodent rotor
with customised bearings



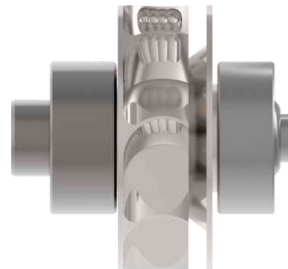
Tehnodent rotor
with standard bearings



With new impeller design,
Tehnodent has managed to increase overall
power for **2W**.



Original design



Tehnodent Impeller design
+2W



TYPE

Rotor push button packages for KAVO* turbines

KAVO 630, 640

KAVO 650

KAVO 642, 645



KAVO 630, 640

21006 - Unit with ceramic bearings
31006 - Customised bearings



KAVO 650

21046 - Unit with ceramic bearings



KAVO 642, 645

21086 - Unit with ceramic bearings
31086 - Customized bearings



KAVO 637



KAVO 637

21106 - Unit with ceramic bearings
31106 - Customised bearings
41106 - Tehnodent Impeller design

KAVO 655, 660



KAVO 655, 660

21126 - Unit with ceramic bearings
31126 - Customised bearings
41126 - Tehnodent Impeller design

KAVO 7000



KAVO 7000

21146 - Unit with ceramic bearings
31146 - Customised bearings
41146 - Tehnodent Impeller design



TYPE

Rotor push button packages for KAVO* turbines

KAVO 8000

KAVO 636, 646

KAVO 635B



KAVO 8000

21186 - Unit with ceramic bearings
31186 - Customised bearings
41186 - Tehnodent Impeller design



KAVO 636, 646

21226 - Unit with ceramic bearings
31226 - Customised bearings
41226 - Tehnodent Impeller design



KAVO 635B

21246 - Unit with ceramic bearings
31246 - Customised bearings
41246 - Tehnodent Impeller design

8

TEHNODENT

KAVO

*Companies KAVO, SIEMENS, SIRONA, BIEN AIR, W&H, NSK, MIDWEST, STAR, MK DENT, CASTELLINI, ELITE, MORITA, ALPHA, VECTOR, CHIRANA, FARO are registered trademarks of the previously mentioned companies. TEHNODENT company or its products is in no way connected with the mentioned companies.



KAVO 639, 642, 645

KAVO 647B, 649B

KAVO 6000B

TYPE



KAVO 639, 642, 645

21266 - Unit with ceramic bearings
31266 - Customised bearings



KAVO 647B, 649B

21286 - Unit with ceramic bearings
31286 - Customised bearings



KAVO 6000B

21326 - Unit with ceramic bearings
41326 - Tehnodent Impeller design



TYPE

Rotor push button packages for KAVO* turbines

KAVO 6500B

KAVO 4500BR, 5000B

KAVO S609, S619



KAVO 6500B

21366 - Unit with ceramic bearings
41366 - Tehnodent Impeller design



KAVO 4500BR, 5000B

21406 - Tehnodent Impeller design
41406 - Tehnodent Impeller design



KAVO S609, S619

21426 - Unit with ceramic bearings
31426 - Customised bearings
41426 - Tehnodent Impeller design



KAVO E679, E680

KAVO S605, S615

KAVO M9000

TYPE



KAVO E679, E680

21446 - Unit with ceramic bearings
41446 - Tehnodent Impeller design



KAVO S605, S615

21476 - Unit with ceramic bearings
31476 - Customised bearings
41476 - Tehnodent Impeller design



KAVO M9000

21486 - Unit with ceramic bearings
31486 - Customised bearings
41486 - Tehnodent Impeller design



TYPE

Rotor push button packages for KAVO* turbines

KAVO E675L

KAVO E675, E677T

KAVO M8700



KAVO E675L

21506 - Unit with ceramic bearings



KAVO E675, E677T

21516 - Unit with ceramic bearings



KAVO M8700

21526 - Unit with ceramic bearings

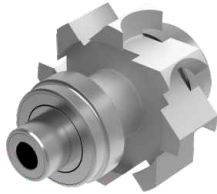


SIEMENS 4000S

SIEMENS TM1 mini

SIEMENS TS1, TS2

TYPE



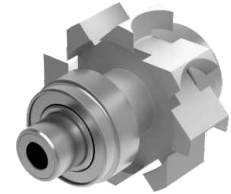
SIEMENS 4000S

22006 - Unit with ceramic bearings
32006 - Customised bearings



SIEMENS TM1 mini

22026 - Unit with ceramic bearings
32026 - Customised bearings
42026 - Tehnodent Impeller design
Org. P/N 5951595



SIEMENS TS1, TS2

22046 - Unit with ceramic bearings
32046 - Customised bearings
Org. P/N 5953054



TYPE

Rotor push button packages for SIRONA* turbines

SIRONA T1 Control TC3

SIRONA T2 Control

SIRONA T2/T3 Racer



SIRONA T1 Control TC3

22066 - Unit with ceramic bearings
32066 - Customised bearings

Org. P/N 4175217

SIRONA T2 Control

22086 - Unit with ceramic bearings

Org. P/N 5668299/5957126

SIRONA T2/T3 Racer

22106 - Unit with ceramic bearings
42106 - Tehnodent Impeller design

Org. P/N 5868307/5868323



SIRONA T1 TMC mini

SIRONA T1/T2/T3 mini

SIRONA SIROBoost

TYPE



SIRONA T1 TMC mini

22126 - Unit with ceramic bearings
32126 - Customised bearings

Org. P/N 4178591



SIRONA T1/T2/T3 mini

22146 - Unit with ceramic bearings
42146 - Tehnodent Impeller design



SIRONA SIROBoost

22166 - Unit with ceramic bearings

Org. P/N 6334598



TYPE

Rotor push button packages for SIRONA* turbines

SIRONA T2, T3 Boost

SIRONA T2/T3 Boost CBM

SIRONA T2 Control



SIRONA T2, T3 Boost

22216 - Unit with ceramic bearings

Org. P/N 6432616

SIRONA T2/T3 Boost CBM

22236 - Unit with ceramic bearings

Org. P/N 6548122

SIRONA T2 Control

22246 - Unit with ceramic bearings

Org. P/N 6548122

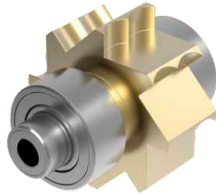


W&H 395, 396

W&H 795, 895, 798

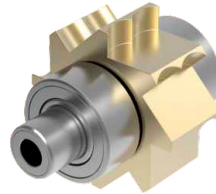
W&H 796, 896

TYPE



W&H 395, 396

23016 - Unit with ceramic bearings
33016 - Customised bearings



W&H 795, 895, 798

23036 - Unit with ceramic bearings
33036 - Customised bearings



W&H 796, 896

23046 - Unit with ceramic bearings
33046 - Customised bearings



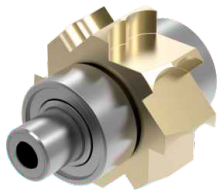
TYPE

Rotor push button packages for W&H* turbines

W&H Trend TC 95

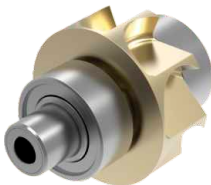
W&H Synea TA 98 (until 1998)

W&H Adec 898



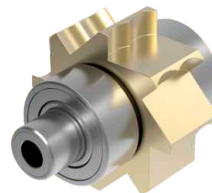
W&H Trend TC 95

23066 - Unit with ceramic bearings
33066 - Customised bearings



W&H Synea TA 98 (until 1998)

23086 - Unit with ceramic bearings
33086 - Customised bearings
43086 - Tehnodent Impeller design



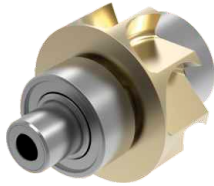
W&H Adec 898

23106 - Unit with ceramic bearings
33106 - Customised bearings



W&H Alegra TE-95

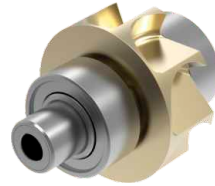
Synea TA-98 (until 2007)



W&H Alegra TE-95

23126 - Unit with ceramic bearings
33126 - Customised bearings
43126 - Tehnodent Impeller design

W&H Alegra TE-98



W&H Alegra TE-98

23146 - Unit with ceramic bearings
33146 - Customised bearings
43146 - Tehnodent Impeller design

W&H Synea TA-96



W&H Synea TA-96

23166 - Unit with ceramic bearings
33166 - Customised bearings
43166 - Tehnodent Impeller design



TYPE

Rotor push button packages for W&H* turbines

W&H Synea TA-98 LED

W&H Fusion TG-98

W&H Synea TA-97 / Alegria TE-97

W&H Alegria TE-95/TE-98



W&H Synea TA-98 LED
W&H Fusion TG-98

23186 - Unit with ceramic bearings
33186 - Customised bearings
43186 - Tehnodent Impeller design



W&H Synea TA-97 / Alegria TE-97

23206 - Unit with ceramic bearings
33206 - Customised bearings
43206 - Tehnodent Impeller design



W&H Alegria TE-95/TE-98

23226 - Unit with ceramic bearings
33226 - Customised bearings



W&H Synea Vision TK/98

W&H Synea Vision TK-100

W&H Alegra TE-97 (2014)



W&H Synea Vision TK/98

23246 - Unit with ceramic bearings
33246 - Customised bearings
43246 - Tehnodent Impeller design



W&H Synea Vision TK/100

23286 - Unit with ceramic bearings



W&H Alegra TE-97

23306 - Unit with ceramic bearings



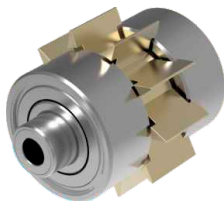
TYPE

Rotor push button packages for BIEN AIR* turbines

BIEN AIR Black Pearl

BIEN AIR Bora

BIEN AIR Prestige



BIEN AIR Black Pearl

24006 - Unit with ceramic bearings
34006 - Customised bearings
44006 - Tehnodent Impeller design

BIEN AIR Bora

24066 - Unit with ceramic bearings
34066 - Customised bearings
44066 - Tehnodent Impeller design

BIEN AIR Prestige

24086 - Unit with ceramic bearings
44086 - Tehnodent Impeller design



BIEN AIR Tornado LK, L



BIEN AIR Tornado LK, L

24106 - Unit with ceramic bearings

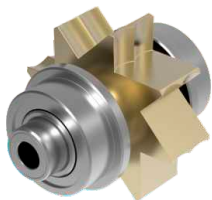
44106 - Tehnodent Impeller design



TYPE

Rotor push button packages for CASTELLINI* turbines

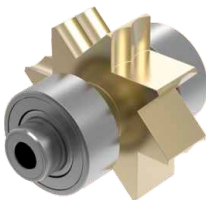
CASTELLINI Hi power M



CASTELLINI Hi power M

25006 - Unit with ceramic bearings
35006 - Customised bearings
45006 - Tehnodent Impeller design

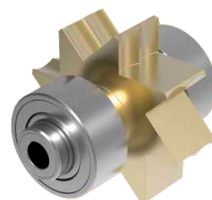
CASTELLINI Hi Power Hi Power 2



CASTELLINI Hi Power, Hi Power 2

25016 - Unit with ceramic bearings

CASTELLINI Gold 2



CASTELLINI Gold 2

25026 - Unit with ceramic bearings



CASTELLINI Silent Power

CASTELLINI Silent Power EVO 4L/4LK



CASTELLINI Silent Power

25046 - Unit with ceramic bearings
45046 - Tehnodent Impeller design



CASTELLINI Silent Power EVO 4L/4LK

25066 - Unit with ceramic bearings



TYPE

Rotor push button packages for MIDWEST* turbines

MIDWEST Tradition L

MIDWEST Tradition XGT

MIDWEST Stylus



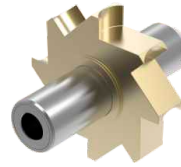
MIDWEST Tradition L

26006 - Unit with ceramic bearings
36006 - Customised bearings



MIDWEST Tradition XGT

26026 - Unit with ceramic bearings
36026 - Customised bearings



MIDWEST Stylus

26040 - Unit w/o bearings



TYPE

Rotor push button packages for MIDWEST* turbines

MIDWEST Stylus 540S

MIDWEST Quiet Air

MIDWEST Quiet Air L



MIDWEST Stylus 540S

26060 - Unit w/o bearings



MIDWEST Quiet Air

26086 - Unit with ceramic bearings



MIDWEST Quiet Air L

26106 - Unit with ceramic bearings

*Companies KAVO, SIEMENS, SIRONA, BIEN AIR, W&H, NSK, MIDWEST, STAR, MK DENT, CASTELLINI, ELITE, MORITA, ALPHA, VECTOR, CHIRANA, FARO are registered trademarks of the previously mentioned companies. TEHNODENT company or its products is in no way connected with the mentioned companies.

MIDWEST

27
TEHNODENT



TYPE

Rotor push button packages for NSK* turbines

NSK Ti-Max X700

NSK Ti-Max X600

NSK Ti-Max X500 and NL9000M



NSK Ti-Max X700

27006 - Unit with ceramic bearings
37006 - Customised bearings



NSK Ti-Max X600

27026 - Unit with ceramic bearings
37026 - Customised bearings



NSK Ti-Max X500 and NL9000M

27046 - Unit with ceramic bearings
37046 - Customised bearings



NSK SX-SU03

NSK SX - MU03

NSK NMC-SU03

TYPE



NSK SX-SU03

27066 - Unit with ceramic bearings



NSK SX - MU03

27086 - Unit with ceramic bearings



NSK NMC-SU03

27116 - Unit with ceramic bearings



TYPE

Rotor push button packages for NSK* turbines

NSK NMC-TU03

NSK Ti-Max Z900

NSK Ti-Max Z800



NSK NMC-TU03

27136 - Unit with ceramic bearings



NSK Ti-Max Z900

27146 - Unit with ceramic bearings
37146 - Customised bearings



NSK Ti-Max Z800

27166 - Unit with ceramic bearings
37166 - Customised bearings



NSK Ti-SU03

NSK Ti-TU03

NSK NPA-SU03

NSK PAX2-SU03

TYPE



NSK Ti-SU03

27186 - Unit with ceramic bearings

NSK Ti-TU03

27206 - Unit with ceramic bearings

NSK NPA-SU03

27226 - Unit with ceramic bearings

NSK PAX2-SU03

27246 - Unit with ceramic bearings



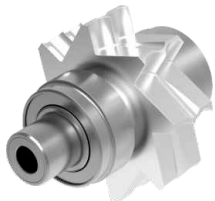
TYPE

Rotor push button packages for MK DENT* turbines

MK DENT TC 2011

MK DENT TC 2012, TC 2032

MK DENT TC 2031



MK DENT TC 2011

28706 - Unit with ceramic bearings
38706 - Customised bearings



MK DENT TC 2012, TC 2032

28726 - Unit with ceramic bearings
38726 - Customised bearings



MK DENT TC 2031

28746 - Unit with ceramic bearings
38746 - Customised bearings



CHIRANA TGL Easy

ELITE mini

ELITE Torque

TYPE



CHIRANA TGL Easy

28846 - Unit with ceramic bearings
38846 - Customised bearings



Elite mini

28166 - Unit with ceramic bearings
38166 - Customised bearings



Elite Torque

28186 - Unit with ceramic bearings
38186 - Customised bearings



TYPE

Rotor push button packages for ALPHA, STAR and VECTOR* turbines

ALPHA Illuminator 45

STAR 430

VECTOR Velocity Extreme mini



Alpha Illuminator 45

28146 - Unit with ceramic bearings
38146 - Customised bearings



STAR 430

28300 - Unit w/o bearings



VECTOR Velocity Extreme mini

28766 - Unit with ceramic bearings



Rotor push button packages for VECTOR and DENTEX* turbines

VECTOR Velocity Extreme

DENTEX - E M3KV - sls



VECTOR Velocity Extreme

28786 - Unit with ceramic bearings



DENTEX - E M3KV - sls

28806 - Unit with ceramic bearings

*Companies KAVO, SIEMENS, SIRONA, BIEN AIR, W&H, NSK, MIDWEST, STAR, MK DENT, CASTELLINI, ELITE, MORITA, ALPHA, VECTOR, CHIRANA, FARO are registered trademarks of the previously mentioned companies. TEHNODENT company or its products is in no way connected with the mentioned companies.

VECTOR / DENTEX

35
TEHNODENT



TYPE

Rotor push button packages for MORITA* turbines

MORITA PAR-4HEX-0

MORITA PAR-4HX-0



MORITA PAR-4HEX-0

28866 - Unit with ceramic bearings



MORITA PAR-4HX-0

28886 - Unit with ceramic bearings



Durability of Tehnodent's back caps is achieved by high grade stainless steel and precise CNC engineering. To make assembly even easier, you can now find the name of each model engraved inside of every back cap.





TYPE

Caps for various turbines

KAVO

SIEMENS / SIRONA

W&H



KAVO

21049 - KAVO 630, 636, 640, 646, 650
21129 - KAVO 655, 660, 609, 619, 7000
21189 - KAVO 8000, M9000
21449 - KAVO E680
21469 - KAVO 605,615



SIEMENS / SIRONA

22009 - SIEMENS 4000S
22069 - SIRONA T1 Control/TC3
22089 - SIRONA T1/T2 Control*
22109 - SIRONA T2/T3 Racer*
22129 - SIRONA T1 TMC Mini
22149 - SIRONA T1/T2/T3 Mini*
22169 - SIRONA Siro Boost*

* delivered with corresponding washers



W&H

23089 - W&H Synea TA-98 (until 2009)
23129 - W&H Alegria TE-95, TE-98 (until 2009)
23169 - W&H Synea TA-96 (until 2009)
23189 - W&H Synea TA-98, TA-98 LED (from 2007)
23209 - W&H Synea TA-97, TA-97 LED (from 2007)
23229 - W&H Alegria TE-95, TE-98,
TE-98 LED (from 2009)



CAPS

Caps for various turbines

BIEN AIR



BIEN AIR

24009 - BIEN AIR Black Pearl*
24069 - BIEN AIR Bora*

* delivered with corresponding washers

NSK



NSK

27009 - NSK Ti-Max X700
27029 - NSK Ti-Max X600
27149 - NSK Ti-Max Z900
27169 - NSK Ti-Max Z800

TOOLS FOR REMOVING CAPS



TOOLS FOR REMOVING CAPS

2831 - KAVO 646, 650, 640, 655, 7000
1788 - SIRONA T1 Control/TC3
1797 - SIRONA T1 TMC Mini
1781 - W&H 395, 795
1783 - W&H Synea TA-97, TA-97 LED (from 2007)
1786 - W&H Synea TA-96 (until 2009)
1787 - W&H Synea TA-98 (until 2009)
1798 - W&H Alegria TE-95/TE-98/TE-98 LED
1799 - W&H Synea TA-98, TA-98 LED (from 2007)
1784 - BIEN AIR Bora
1789 - BIEN AIR Black Pearl
2835 - BIEN AIR Croma TR
1803 - NSK Z900
1804 - NSK Z800

*Companies KAVO, SIEMENS, SIRONA, BIEN AIR, W&H, NSK, MIDWEST, STAR, MK DENT, CASTELLINI, ELITE, MORITA, ALPHA, VECTOR, CHIRANA, FARO are registered trademarks of the previously mentioned companies. TEHNODENT company or its products is in no way connected with the mentioned companies.

CAPS

39
TEHNODENT

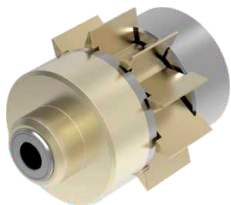


TYPE

Rotors for lab handpieces

BIEN AIR LAB TD783, TDS890 **FARO Mistral**

FARO TL 420



BIEN AIR LAB TD783, TDS890

Art. No. 24125



FARO Mistral

Art. No. 28547



FARO TL 420

Art. No. 28527



Lab handpiece

Rotor for Tehnodent lab handpiece

TEHNODENT LAB HANDPIECE

TYPE



Rotor for Tehnodent lab handpiece

Art. No. 24826



TEHNODENT lab handpiece

Drive air pressure: 3.0 to 3.2 bar
Spray air pressure: 2.5 bar
Spray flow: 60 ml/min
Weight: 93 gr
Power: 25 W
Rotation speed: 330,000 to 350,000 rpm
Bur's diameter: \varnothing 1.6

Art. No. 24800

TEHNODENT LAB HANDPIECE

*Companies KAVO, SIEMENS, SIRONA, BIEN AIR, W&H, NSK, MIDWEST, STAR, MK DENT, CASTELLINI, ELITE, MORITA, ALPHA, VECTOR, CHIRANA, FARO are registered trademarks of the previously mentioned companies. TEHNODENT company or its products is in no way connected with the mentioned companies.

41
TEHNODENT



TYPE

HEAD GEARS for Contra Angles

KAVO 25LH

KAVO 25LP

KAVO E25L

KAVO M25L

KAVO LUX M05L



KAVO 25LH

Art. No. 2506

KAVO 25LP

Art. No. 2516

KAVO E25L

Art. No. 2526

KAVO M25L

Art. No. 2536

KAVO LUX M05L

Art. No. 2546



TYPE

BIEN AIR CA, 1:5

**SIRONA T2 Line
A 200L, Z13, 1:5**

**SIRONA S200L,
Z11, 1:5**

**SIRONA S200L,
C200L, Z13, 1:5**



BIEN AIR CA, 1:5

Art. No. 2566

SIRONA T2 Line A 200L, Z13, 1:5

Art. No. 2576

SIRONA S200L, Z11, 1:5

Art. No. 2586

SIRONA S200L, C200L, Z13, 1:5

Art. No. 2596

BIEN AIR / SIRONA

*Companies KAVO, SIEMENS, SIRONA, BIEN AIR, W&H, NSK, MIDWEST, STAR, MK DENT, CASTELLINI, ELITE, MORITA, ALPHA, VECTOR, CHIRANA, FARO are registered trademarks of the previously mentioned companies. TEHNODENT company or its products is in no way connected with the mentioned companies.



TYPE

HEAD GEARS for Contra Angles

W&H WA-99 (until 2007)

W&H WA-99 (from 2007)

NSK M95, X95



W&H WA-99 (until 2007)

Art. No. 2606

W&H WA-99 (from 2007)

Art. No. 2616

NSK M95, X95

Art. No. 2626



BIEN AIR MC2 LED

BIEN AIR MC2 IR

BIEN AIR MC3 IR, MC3 LK



BIEN AIR MC2 LED

Art. No. 1332

BIEN AIR MC2 IR

Art. No. 1334

BIEN AIR MC3 IR, MC3 LK

Art. No. 1333



TYPE

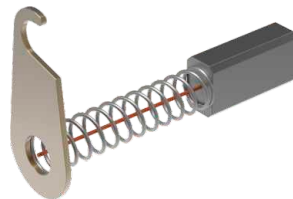
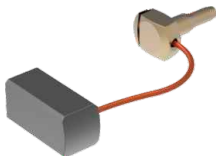
Brushes for micromotors

BIEN AIR MC2

BIEN AIR MC3

KAVO

SIEMENS



BIEN AIR MC2

Art. No. 1335

BIEN AIR MC3

Art. No. 1345

KAVO

Art. No. 1314

SIEMENS

Art. No. 1301

TEHNODENT D.O.O.

Rudjinci 116 v
36210 Vrnjačka Banja - Serbia
Tel: +381 (69) 1 444 745

www.tehnodent.com
info@tehnodent.com





Our quality Your success

TEHNODENT D.O.O.

Rudjinci 116v, 36210 Vrnjačka Banja / Serbia

Tel: +381 (69) 1 444 745

info@tehnodent.com

www.tehnodent.com